



# Bundaberg Civic Centre

## Information for hirers

The Bundaberg Civic Centre is situated in the main street of Bundaberg, close to local government offices, post office, cafes and shops, and adjacent to the city's primary civic park.

Popular for key community events including graduation ceremonies, trade shows, public displays and performances, the centre contains a large auditorium incorporating a bar and stage, along with a kitchen and supper room.

The Civic Centre Auditorium accommodates up to 900 people theatre style and the Supper Room seats up to 150 people.

The Supper Room is air-conditioned and is ideal for group meetings, conferences and training sessions.

There is a loading dock to service the auditorium, and 3 phase power is available upon request (please note fees apply).

## Location

190 Bourbong Street Bundaberg Qld 4670

## Facilities

---

Wheelchair access

---

Auditorium & stage

---

Wheelchair accessible toilets

---

Supper room

---

Kitchen

---

Bar

---

## Booking

[bookings@bundaberg.qld.gov.au](mailto:bookings@bundaberg.qld.gov.au)

or 1300 883 699

MD-7-710 Rev.3 24/10/18 P1 of 3

## Areas available



### Supper room

- Air-conditioning
- PA system with microphone
- Carpeted floor
- Powerpoints
- Room dimensions 19m x 15 m approx

*Equipment available upon request: portable screens for partition or display purposes.  
Whiteboard (portable).*



### Auditorium

- Timber flooring
- Elevated Stage (9m deep)
- Lectern
- Piano
- Changeroom
- Loading dock
- Powerpoints
- Room dimensions 39m x 23m approx

*Equipment available upon request: Drop leads for 3-phase power (additional fees apply)*



### Kitchen

- Fridge & freezer
- Food prep area
- Zippy boil (2), hot water urn (1)
- Bain Marie (food warmer)
- Dishwashing machine
- Powerpoints

*No crockery, cutlery or linen is provided.*




### Bar

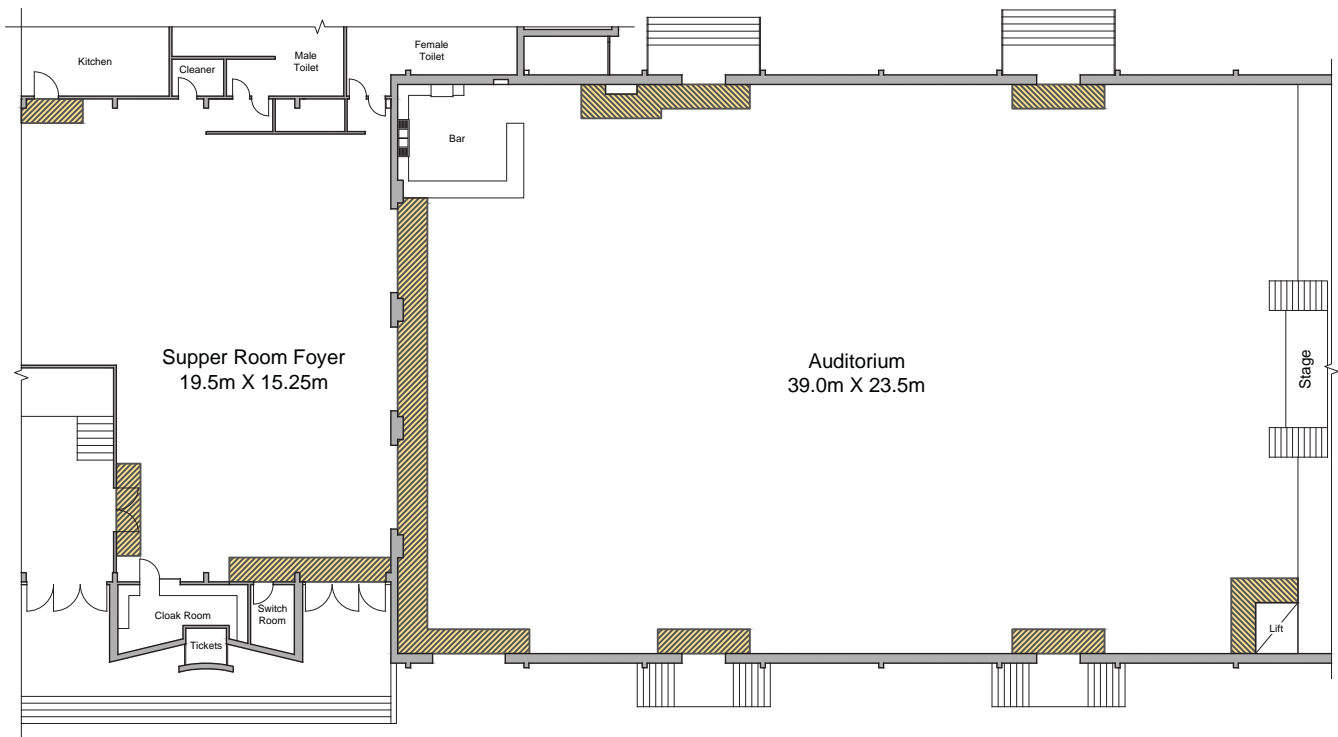
- Double door fridge
- Drinks storage tubs (2)
- Sink
- Glass washing machine
- 4.5m x 4.5m approx
- Glassware available at additional cost:
  - 400 wine glasses
  - 700 beer glasses
  - 80 glass jugs

# Other information

## Civic Centre floor plan

**Legend:**

 Clear Zone



Seating layout plans available upon request

Chairs and tables available on request:

- 570 plastic chairs
- 99 tables
- 150 padded chairs (Supper room only)

- On street car parking (up to 2 hour limit) in CBD main streets
- On street loading zone and disabled car parks in close proximity
- Public car parks (all day) are situated in nearby Quay Street

There are over 1400 all day (non regulated) parks within easy walking distance and there are also over 1850 regulated parking bays for people who visit the CBD.

